

# OUR MEMBERSHIP



**Amplify Alliance  
Australia Limited**  
ABN 17 007 263 916

Level 7, Suite 7.01  
454 Collins Street  
Melbourne VIC 3000

1800 331 915  
[amplifyalliance.org.au](http://amplifyalliance.org.au)

**A** Amplify  
Alliance

## **Amplify Alliance Australia is a Member-led peak body representing Not for Profit organisations delivering human and social services across Australia.**

**Our purpose is to empower Members to change lives.**

We provide sector leadership, representation and advocacy, and policy insights to support stronger organisations, more effective systems and improved outcomes for communities.

Like our Members, we are a Not for Profit too. This gives us a deeper understanding of your challenges and opportunities.

Whether its through practical support, advocacy and representation or our community, we are here to amplify your impact and represent the NFP sector to decision-makers and government.

**Together, we amplify the Not for Profit sector as a united force for good.**



**Build the capability and capacity of our Members.**



**Foster sector alignment and strength.**



**Promote the value and impact of our sector.**



## Membership Inclusions

### Access to:

- Amplify Alliance Australia 'Communities of Interest' groups.
- Discounted rates on all events, workshops, training and education.
- Discounted rates on bespoke training and education.
- Discounted fees for expert Workplace Relations consultancy including coaching, mentoring, mediation, investigation, or bespoke services.
- Awards, pay tables, and agreements.
- Subscription to our Blanket Cover Insurance Program.
- Subscription to our monthly newsletter.
- Subscription to our mailing list.
- Jobs Hub platform free vacancy listings.
- Tailored services and products.

### Advice on:

- Human Resource Management.
- Industrial Relations.

### Full Members also receive:

- Full voting rights at Amplify Alliance Australia elections.
- Advocacy for employment services and employability skills on nationally government-funded programs.
- Representation for education, training and skills development providers.
- Representation of community services associated with employment and training pathways.
- Access to our Clarion Calls.

## Membership Fees

	Associate	Full
0 - 1.9 FTE	\$604	\$927
2 - 5.9 FTE	\$731	\$1,362
6 - 9.9 FTE	\$874	\$1,982
10 - 19.9 FTE	\$1,282	\$2,628
20 - 49.9 FTE	\$1,632	\$4,086
50 - 99.9 FTE	\$1,865	\$6,433
100 - 199.9 FTE	\$2,560	\$8,087
200+ FTE	\$3,492	\$9,252

Peak body membership entitles you to receive a 10% discount on your membership. Peak body membership is only available to Associate Members.

Tailored fees for Group Companies, Men's Sheds and Insurance-only organisations may be available by enquiry.

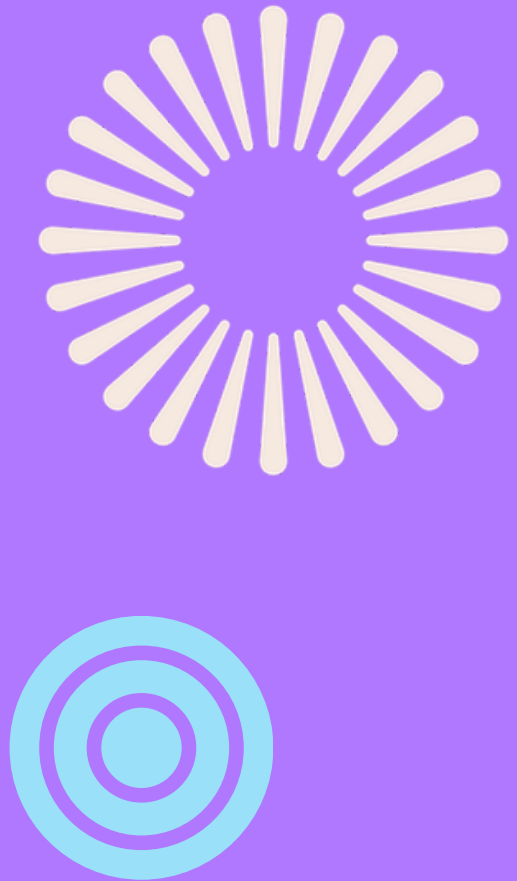
**All pricing includes GST.**

# Secure Membership Today

 1800 331 915

 [info@amplifyalliance.org.au](mailto:info@amplifyalliance.org.au)

 [amplifyalliance.org.au/join](https://amplifyalliance.org.au/join)



---

Amplify Alliance acknowledges the traditional owners of country throughout Australia and their continuing connection to land and community. We pay our respects to them and their cultures, and to the elders both past and present.

Please consider the environment before printing.

---

**Amplify Alliance  
Australia Limited**  
ABN 17 007 263 916

Level 7, Suite 7.01  
454 Collins Street  
Melbourne VIC 3000

1800 331 915  
[amplifyalliance.org.au](https://amplifyalliance.org.au)

**A** Amplify  
Alliance